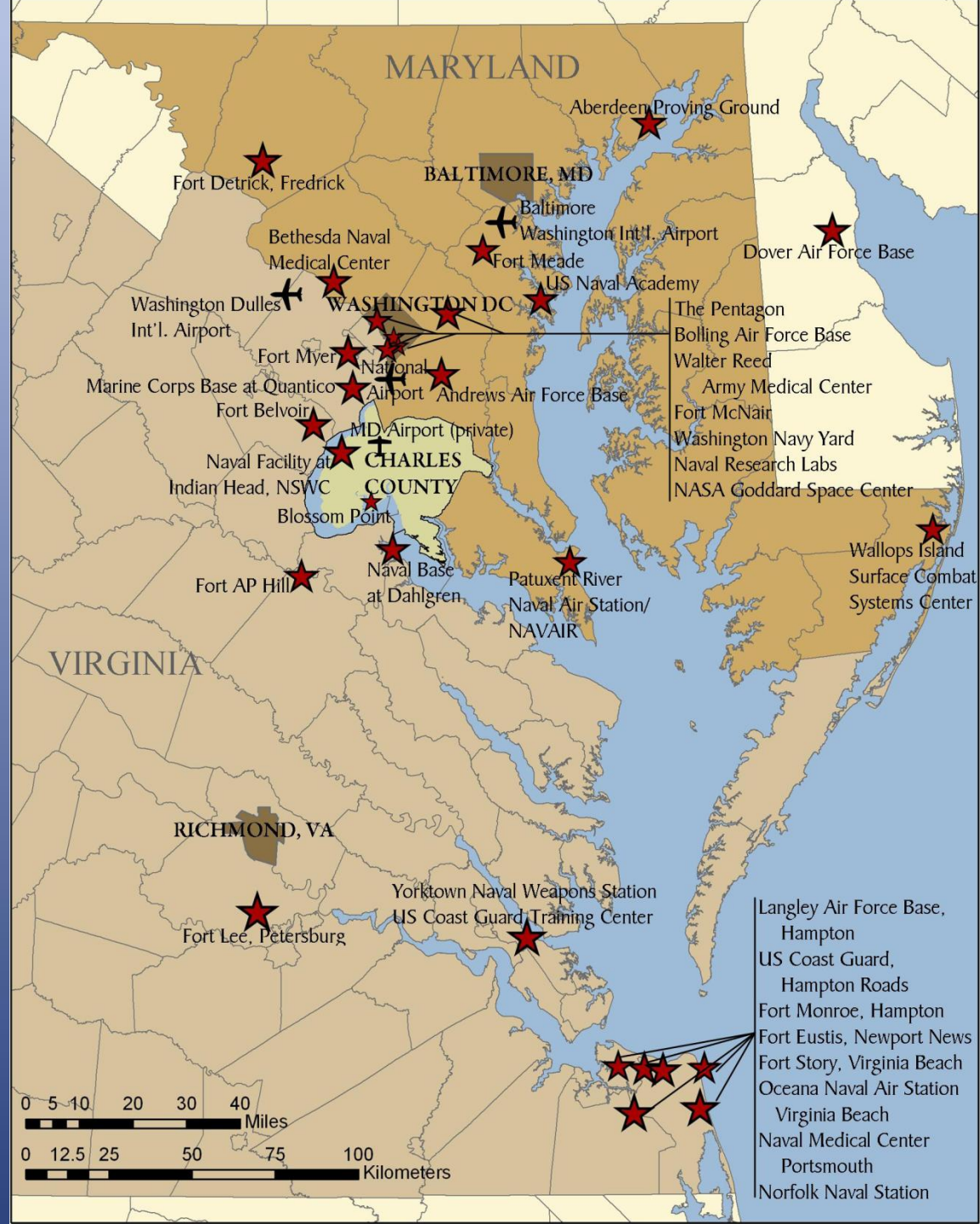
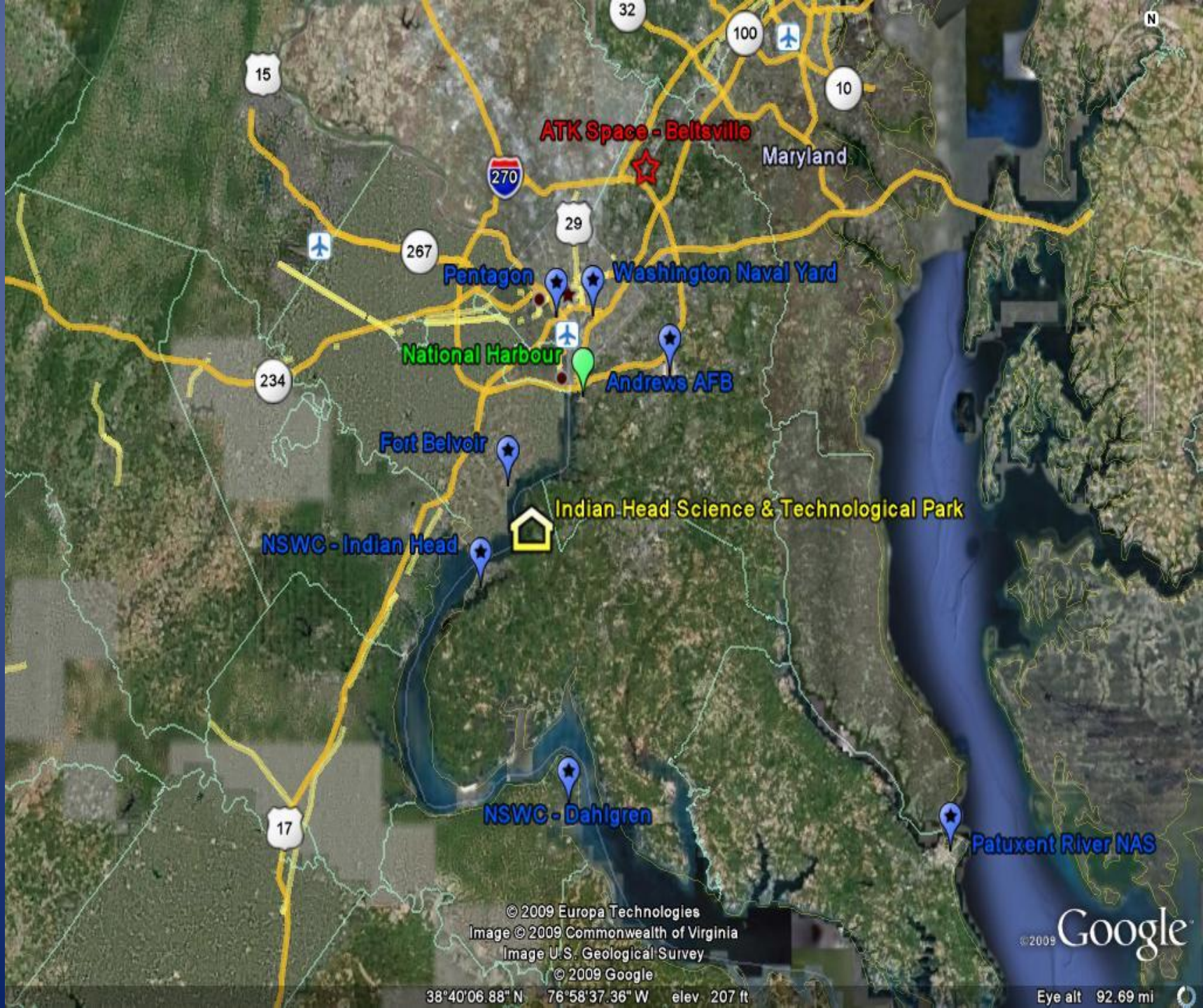


**WELCOME
TO
CHARLES COUNTY**

Location
really does
matter





ATK Space - Beltsville

Maryland

Pentagon

Washington Naval Yard

National Harbour

Andrews AFB

Fort Belvoir

Indian Head Science & Technological Park

NSWC - Indian Head

NSWC - Dahlgren

Patuxent River NAS

© 2009 Europa Technologies

Image © 2009 Commonwealth of Virginia

Image U.S. Geological Survey

© 2009 Google

38°40'06.88" N 76°58'37.36" W elev. 207 ft

© 2009 Google

Eye alt 92.69 mi



**451.28 sq
miles of
Land Area**

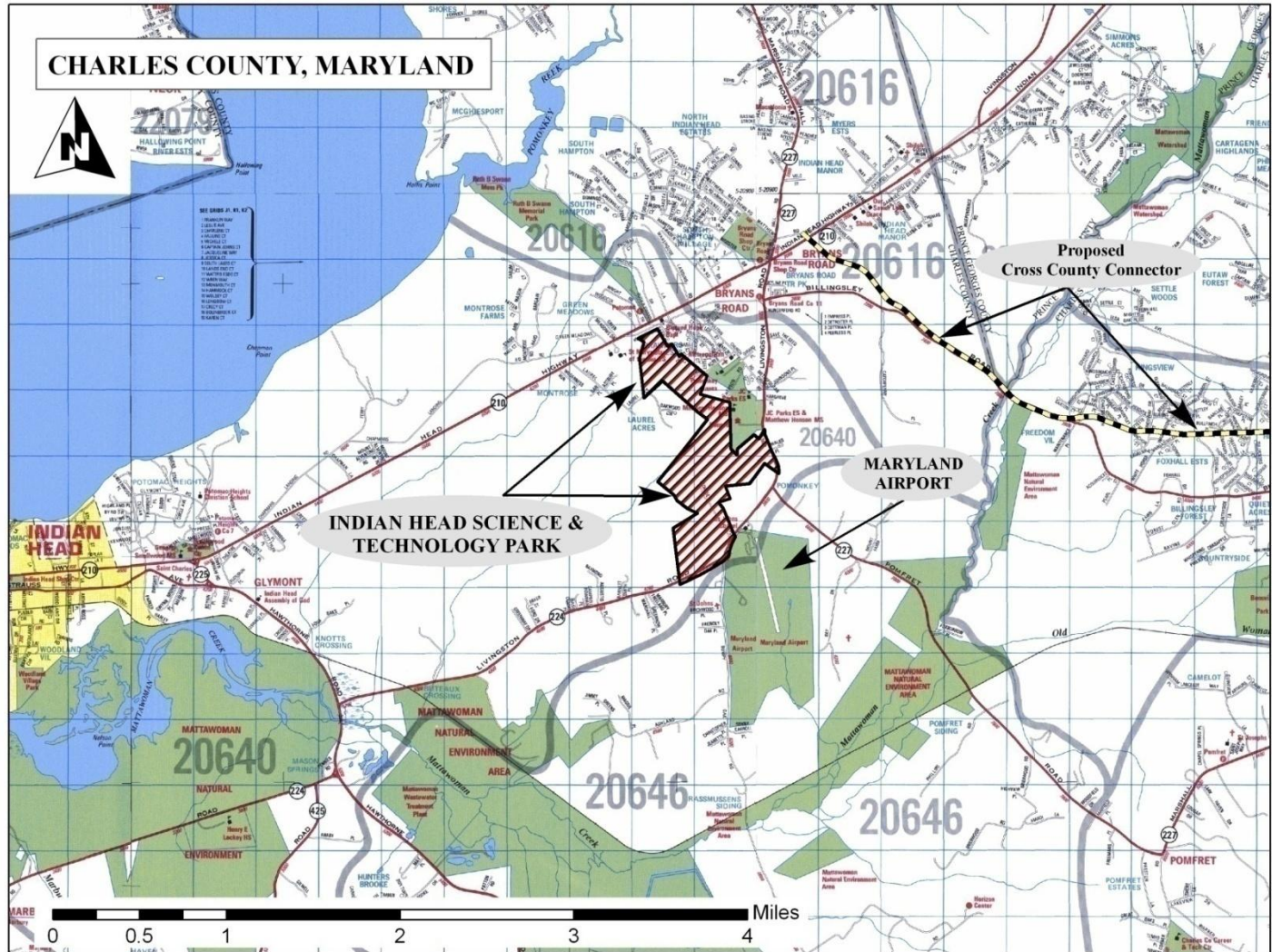
**35.2 sq miles
of Water
area**

**305 miles of
Shoreline**

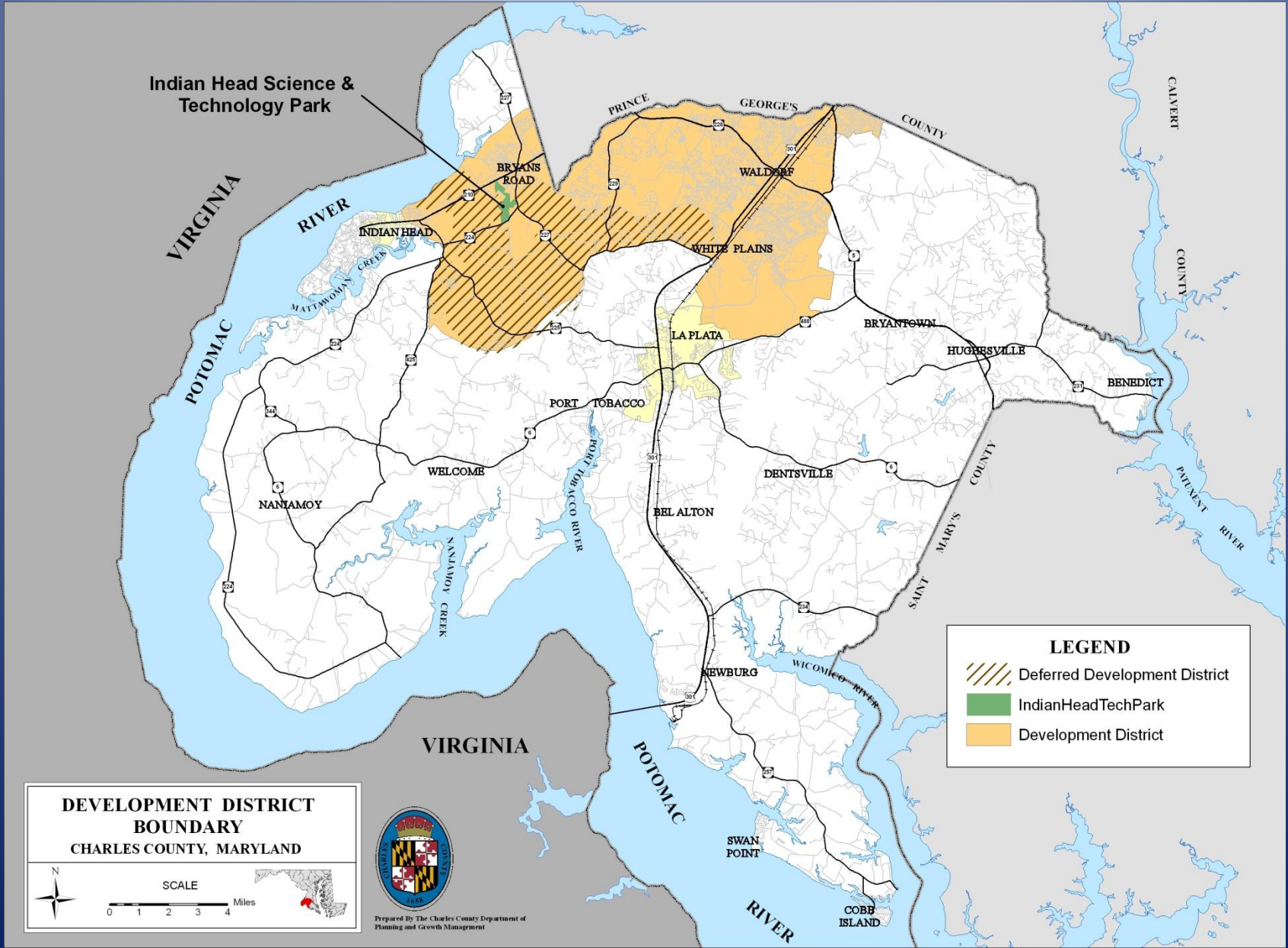
Population = 142,612
Median Household Income = \$86,586
Naval Dept of Defense at Indian Head
Employees 3,118



FREQUENTLY
ASKED
QUESTIONS



Charles County Development District



Enhanced Transportation Program

**Cross County
Connector**

Phase 3B

**Rte. 301 to St.
Patrick's Drive**



MARYLAND AIRPORT



It is our hope a terminal building similar to this one will be built at Maryland Airport



Mirant Morgantown Generating Station



The \$600,000,000 upgrade to the Mirant Morgantown Generating Station has provided Environmental Protection.



Barging of materials is also taking traffic off of our Highways.



The new SMECO Headquarters complex for Southern Maryland will be located in Charles County.

Targeted for completion, December 2010



Natural Gas Electric Generation Plant

CLEANPOWER
FOR PEOPLE

**76 Acre site in Piney
Reach Industrial Park**

650 Megawatt

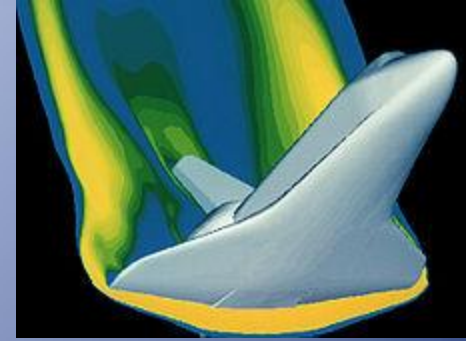
**\$1.4 million annual
payroll**

**\$400,000,000 capital
investment**





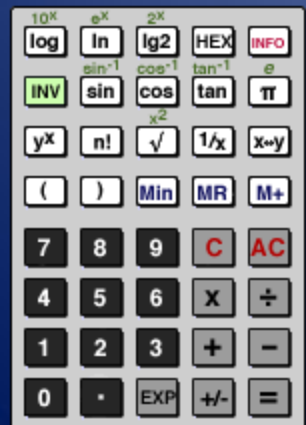
Science



Technology

Engineering

Math



STEM

Committed Partners:

Naval Surface Warfare Center

Patuxent River Air Station

National Space Foundation

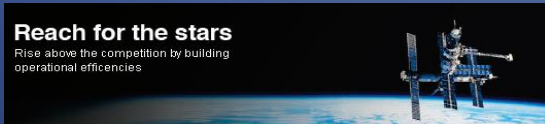
Energetics Technology Company

CISCO

NASA

IBM

Reach for the stars
Rise above the competition by building
operational efficiencies



College of Southern Maryland

University of Maryland, Baltimore Campus

New Charles County Schools...



Mary Burgess Neal Elementary
Built 2008, construction cost \$19.6M



Theodore G. Davis Middle School
Built 2007, construction cost \$26.4M

North Point High School
Built 2005, construction cost \$50M



William A. Diggs Elementary
Built in 2006, construction cost \$23M

Future High School “Digital Classroom”



College of Southern Maryland Partners for the Future



Major Industries Served by CSM

Defense

**Energy
(Traditional
& Green)**

Hospitality

Construction

Health

Public Safety



Industry Partners: Energetics Technology Center

ETC donated \$500k grant to develop STEM
pipeline

Provides:

Scholarships

Mentorships

Internships/Co-ops

Considering an
Energetics Technician
Degree



STEM Institute

- \$500k program about to be launched
- To integrate regional programs and expand the pipeline of students interested in STEM careers.
- Will work with all sectors
- Teacher training will be a major component



Baccalaureate Education in Charles County

**University of Maryland
University College**

B.S. in:

Business Administration

Computer Studies

**Information Systems
Management**

Criminal Justice

Towson University

**B.S. in Elementary
Education**



County Owned Parks

The County owns and Operates eleven Parks

Athletic fields

Tennis courts

Hiking trails

Lakes

Fishing

Boating facilities

History

Picnic areas



Play grounds
Special needs playground areas
Equestrian facilities
Skateboarding
Dog parks





Aquatics



Newly Opened

Indian Head to White Plains Rail Trail

13 mile trail

Amenities:

interpretative signs

benches

picnic areas

mile markers



18 months to construct

Opened November 2009

Golf Courses Open to the Public



**White Plains Golf
Course**
(County owned)

**Swan Point Yacht
& County Club**
(Privately owned)



State Parks of Charles County

Chapman's State Park

Myrtle Grove State Park

Smallwood State Park

Chapel Point State Park

Purse State Park



Civista Medical Center & University of Maryland Medical System



Charles County History



Maxwell Hall House



Dr. Samuel Mudd House



Thomas Stone House

Using many hours of research, the map to the right and GPS the site of Charles County's original Courthouse was located in 2008 during our 350th Anniversary Celebration. The location is south of here only a few miles.



Housing



Public Safety



Dispatch



BLS
EMT-B



ALS
EMT-P

Charles County Sheriff's Office
Funded at 1 Officer per 500 in Population



State of the Art
Emergency
Communications
Center



Dedicated Volunteer
Fire Service

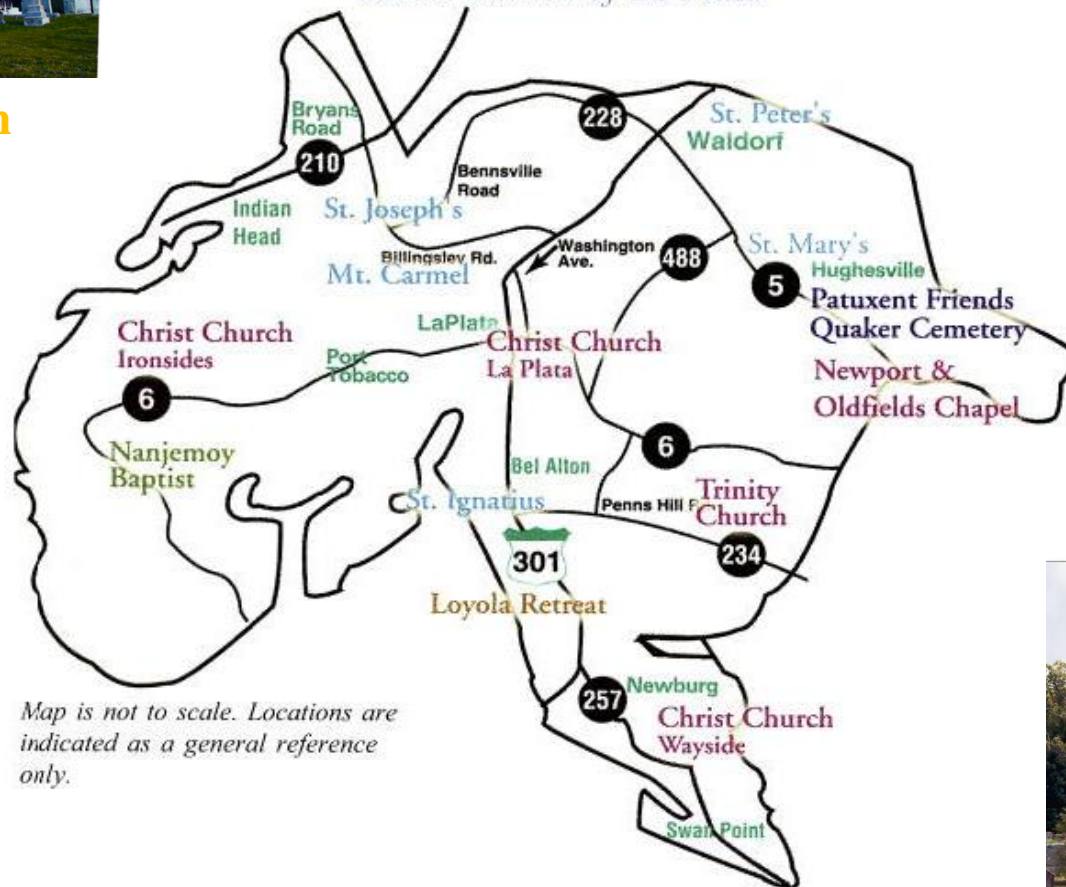
Like the new Hotel planned for the Indian Head Science & Technology Park large Corporate chains see Charles County as a place to stay!



Historic Churches of Charles County



- *St. Ignatius Church* • *St. Mary's Church*
- *Trinity Church~Oldfields Chapel* • *St. Peter's Church*
- *Christ Church Durham* • *Nanjemoy Baptist*
- *St. Joseph's Church* • *Christ Church~Wayside*
- *Patuxent Friends Cemetery* • *Mount Carmel Monastery*
- *Christ Church of La Plata*



Map is not to scale. Locations are indicated as a general reference only.

St. Ignatius Church

Durham Church



